



Value-added agriculture is a key industry for Sturgeon County. The County offers access to a robust labour force in the Edmonton Metro Region along with access to global markets.

Sturgeon County has seen extensive growth in our agricultural processing capacity within the alfalfa, oats and cereals, and grain handling market segments. The recent launch of two major value-added agriculture incentives actively supports further investment and expansion in this sector.

## An Agricultural Powerhouse

### INNOVATION + SMART AG-TECH

The County is exploring new development concepts in the Villeneuve Airport area, including an Agri-Innovation Hub. We want to increase sustainable agriculture and investment in value-added agribusiness and food development investment by combining applied research and commercialization facilities. At these facilities there will be a focus on intelligent farming including land and experimental farming, new crop/commodities and finished product development.

### EXISTING SUPPLY CHAIN CLUSTER

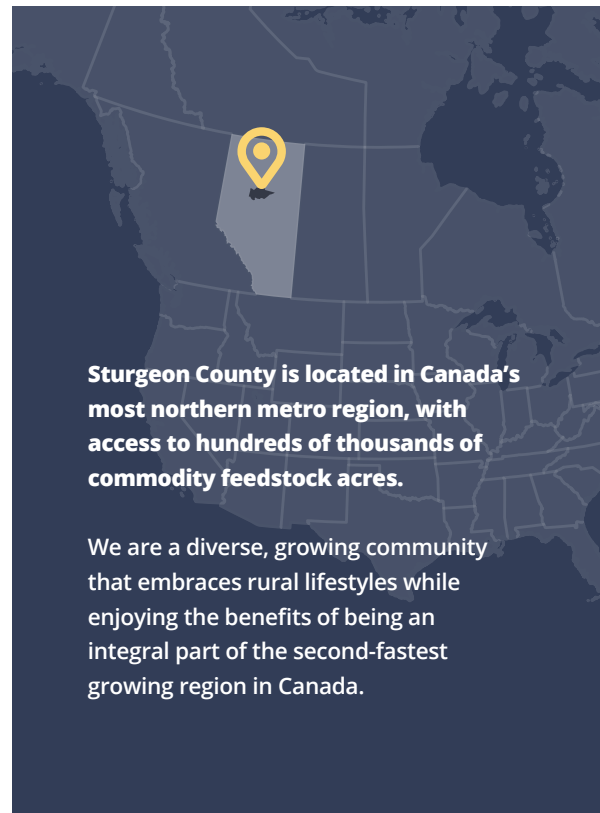
The County has a well-developed value chain that includes easy access to feedstock and more. It is home to numerous well-known agribusinesses including Canadian Oats, Legal Alfalfa, Faba Canada, G3 and Nutrien.

### SERVICED, SHOVEL-READY LANDS

Sturgeon Industrial Park offers developable lands suited for a range of uses including food processing, smart ag-tech development, food ingredient production and more. The County's **Value-Added Agricultural Incentive (up to two per cent tax exemption)** is stackable with the province's **Alberta Agri-Processing Investment Tax Credit (up to 12 per cent)** to enhance your profitability.

### PRODUCTION IN THE COUNTY

- **513,000 TOTAL FARM ACRES**  
WITH CLASS 1 SOILS THROUGHOUT
- **140,000+ ACRES**  
CANOLA
- **55,000+ ACRES**  
BARLEY
- **125,000+ ACRES**  
WHEAT



**Sturgeon County is located in Canada's most northern metro region, with access to hundreds of thousands of commodity feedstock acres.**

We are a diverse, growing community that embraces rural lifestyles while enjoying the benefits of being an integral part of the second-fastest growing region in Canada.

>840K

LABOUR FORCE

Access to over 840K people within an hour drive and eight post-secondary institutions with over 130K students.

- Edmonton Global

\$422M

OPERATING REVENUE

Farmers located in the County have the highest total operating revenue in Canada, \$422M in 2021.

- Federal Agricultural Census 2021

1.5B

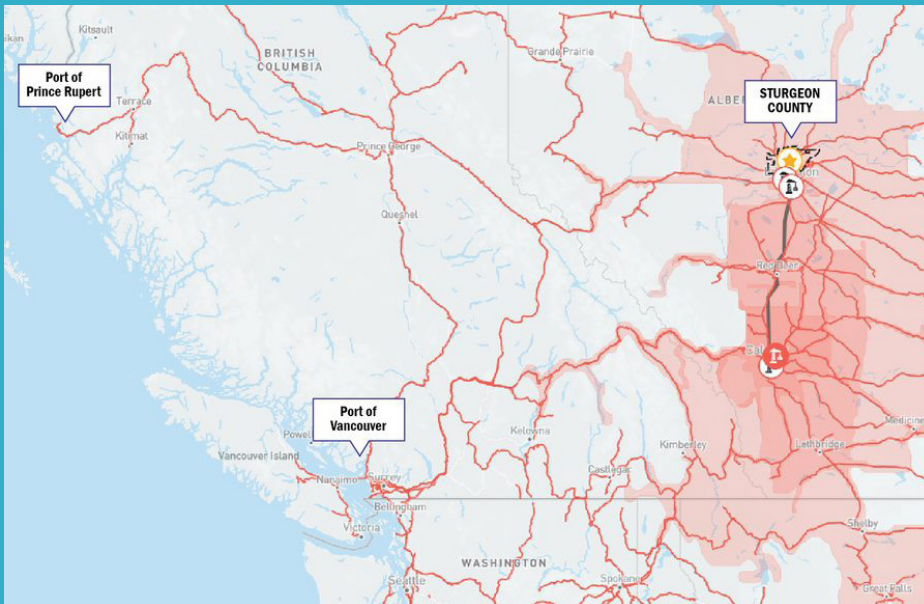
CUSTOMERS

There are trade agreements in place that allow access to 1.5B customers world-wide.

- Invest Canada

# Connectivity and Logistics Advantages

The Edmonton Metro Region is linked by road and rail to major ports on Canada's West Coast, including the Port of Vancouver and Port of Prince Rupert.



## PORT OF PRINCE RUPERT

Prince Rupert is North America's fastest growing port. It is the deepest port in North America and the closest to Asia. It provides access to over 170 countries. Shipping from the Port of Prince Rupert can shave up to four days of shipping time to key Asian markets.

## PORT OF VANCOUVER

Canada's largest and most diversified port. The port handles \$1 of every \$3 of Canada's trade in goods outside North America.



## PARTNERSHIP & TARGET INVESTMENT AREAS

- Plant-based Proteins
- Food Ingredient Production
- Food Processing & Greenhouses
- Food Sustainability and Diversification
- Large-scale Commodity Feedstock
- Smart Ag-Tech



## LET'S CONNECT

Work with our team to identify economic benefits including qualified suppliers, world-class research partners, incentives, and shovel-ready development sites.

[ecdev@sturgeoncounty.ca](mailto:ecdev@sturgeoncounty.ca)  
+1 (780) 939-8367

