

ALBERTA, CANADA



Sturgeon County's strategic location, nestled amidst the Edmonton Metropolitan Region and Alberta's Industrial Heartland, offers the infrastructure and logistical support your business needs to expand globally. With a focus on modern transportation networks and proximity to major markets, our location provides a solid foundation for your investment endeavors.



#### INVESTMENT INCENTIVES

The County is committed to being globally competitive, enhance your profitability with our incentives.



#### LOGISTICS DEMAND

Alberta is the second largest exporter in Canada, as of May 2023.



#### SUPPORTIVE ECOSYSTEM

Partner with local transportation and logistics companies.

## GATEWAY TO GLOBAL OPPORTUNITIES

### INTERNATIONAL MARKET ACCESS

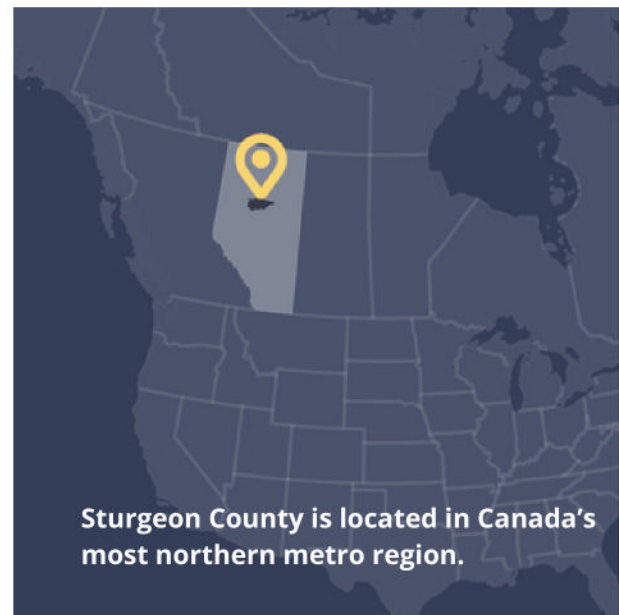
The Edmonton Region is a Foreign Trade Zone with air, sea, and road connectivity to support access to global markets. In Sturgeon County you can immediately access 14 major highways and CN Railway's Class 1 Network (spans Canada and mid-America, connecting to three coasts).

### SECTOR-READY SITES

The I4 Medium Industrial Serviced District and I5 Heavy Industrial District include rail spurs, rail right-of-way, or Public Utility Lots that connect to critical transportation and logistics infrastructure.

### ALIGNED MUNICIPAL DEVELOPMENT

The County is rapidly enhancing existing road networks with support from the Province and has multiple rail ready sites available for investment.



**Sturgeon County is located in Canada's most northern metro region.**

We are a diverse, growing community that embraces rural lifestyles while enjoying the benefits of being an integral part of the second-fastest growing region in Canada.

# >840K

## LABOUR FORCE

Access to over 840K people within an hour drive and eight post-secondary institutions with over 130K students.

- Edmonton Global

# 1.66%

## ANNUAL INDUSTRY GROWTH

Canada's Third-Party Logistics market is expected to grow annually by 1.66% from 2023 to 2028.

- Statista

# 1.5B

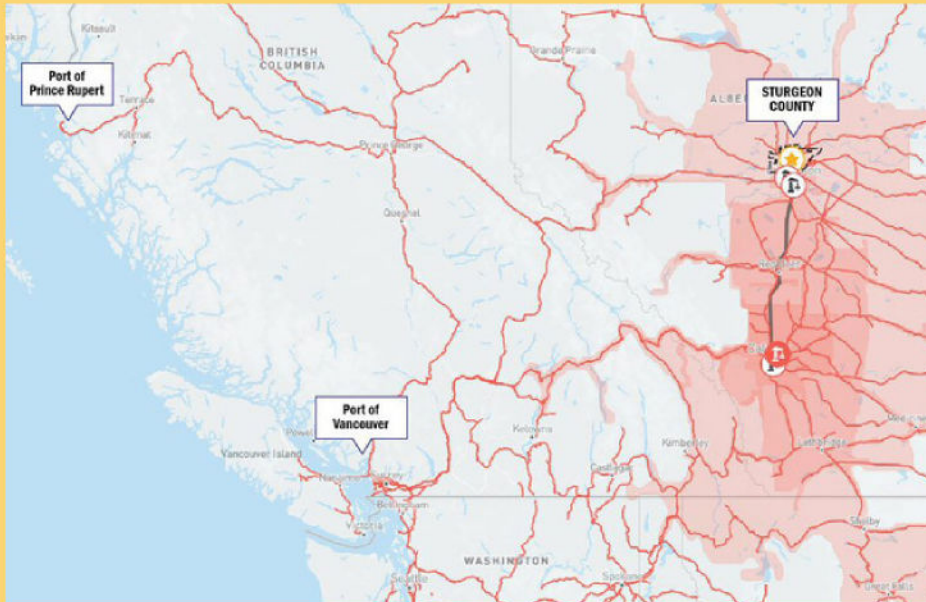
## CUSTOMERS

There are trade agreements in place that allow access to 1.5B customers world-wide.

- Invest Canada

# Connectivity and Logistics Advantages

The Edmonton Metro Region is linked by road and rail to major ports on Canada's West Coast, including the Port of Vancouver and Port of Prince Rupert.



## PORT OF PRINCE RUPERT

Prince Rupert is North America's fastest growing port. It is the deepest port in North America and the closest to Asia.

It provides access to over 170 countries. Shipping from the Port of Prince Rupert can shave up to four days off shipping time to key Asian markets.

## PORT OF VANCOUVER

Canada's largest and most diversified port. The port handles \$1 of every \$3 of Canada's trade in goods outside North America.



## PARTNERSHIP & TARGET INVESTMENT AREAS

- Air transportation
- All other electrical equipment & components
- General purpose machinery Grains & oilseed
- Motor vehicle & parts dealers

## LET'S CONNECT

Work with our team to identify economic benefits including qualified suppliers, world-class research partners, incentives, and shovel-ready development sites.

[ecdev@sturgeoncounty.ca](mailto:ecdev@sturgeoncounty.ca)  
**+1 (780) 939-8367**

