



With a diverse array of opportunities spanning solar, wind, and hydrogen developments, Sturgeon County offers a fertile ground for sustainable investment. The renewable electricity generation market in Canada is expected to grow annually by 2.26% (CAGR 2023-2028). Explore our offerings and join us in driving growth in clean energy.

SUSTAINABLE ADVANTAGES

LEADING INDUSTRY CLUSTER

The County is a proud founding member of Alberta's Industrial Heartland Association (AIHA). Alberta's Industrial Heartland offers designated pre-zoned developable land for renewable firms to locate directly next to major industrial facilities and provide low-carbon energy.

ENERGY DEMANDS

In Alberta, Canada's only deregulated electrical market, peak demand is expected to hit 12,436 MW by 2026 offering opportunities for investment.

COST-ADVANTAGED HYDROGEN

Access to abundant, low-cost natural gas feedstock and favourable geology for carbon storage. Sturgeon County provides significant opportunities for both decarbonization and investment.



SOLAR POWER PRODUCTION INCENTIVE

Stackable municipal tax exemption of 1% of eligible project costs



GLOBAL MARKET ACCESS

Rail, road and marine connection networks



ENERGY ECOSYSTEM

>40 potential industry partners



Sturgeon County is located in Canada's most northern metro region.

We are a diverse, growing community that embraces rural lifestyles while enjoying the benefits of being an integral part of the second-fastest growing region in Canada.

>840K

LABOUR FORCE

Access to over 840K people within an hour drive and eight post-secondary institutions with over 130K students.

- Edmonton Global

582 km²

INDUSTRIAL ENERGY CLUSTER

Alberta's Industrial Heartland is Canada and the world's largest hydrocarbon processing region with \$45 billion in industrial investment

- Alberta's Industrial Heartland Association

1.5B

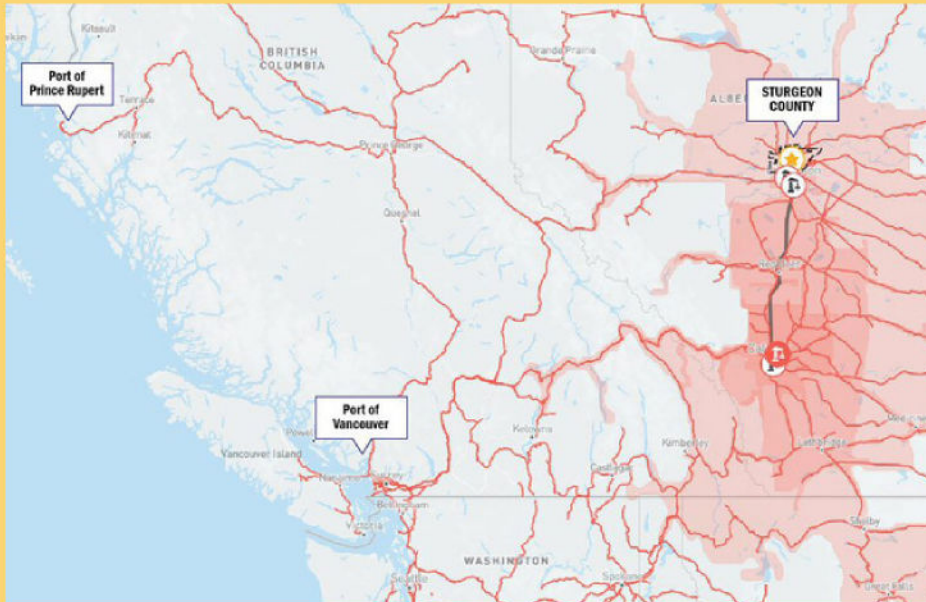
CUSTOMERS

There are trade agreements in place that allow access to 1.5B customers world-wide.

- Invest Canada

Connectivity and Logistics Advantages

The Edmonton Metro Region is linked by road and rail to major ports on Canada's West Coast, including the Port of Vancouver and Port of Prince Rupert.



PORT OF PRINCE RUPERT

Prince Rupert is North America's fastest growing port. It is the deepest port in North America and the closest to Asia.

It provides access to over 170 countries. Shipping from the Port of Prince Rupert can shave up to four days off shipping time to key Asian markets.

PORT OF VANCOUVER

Canada's largest and most diversified port. The port handles \$1 of every \$3 of Canada's trade in goods outside North America.



PARTNERSHIP & TARGET INVESTMENT AREAS

- Other electric power generation: hydrogen and waste heat-to-energy
- Other renewable energy support services
- Solar electric power
- Wind electric power

LET'S CONNECT

Work with our team to identify economic benefits including qualified suppliers, world-class research partners, incentives, and shovel-ready development sites.

ecdev@sturgeoncounty.ca
+1 (780) 939-8367

