

May 22, 2024

Dear Resident/Landowner,

Re: **Landscaping – Meadowview Drive**

---

We are writing to let you know that starting this spring/summer, a landscaping contractor will be working on landscaping along the Phase 1 area of Meadowview Drive. This covers the section between Range Road 261A and Range Road 263A.

Establishing grass after the Meadowview Drive reconstruction has been challenging with several areas being sub-standard. A joint inspection with Transportation & Engineering Services and Agriculture Services was done following the snowmelt. In addition, the County received comments from residents about this project. As a result, plans were developed to enhance the landscaping.

#### **What this means to you**

Residents will notice topsoil/compost being applied in selected locations, with premium turf mix being used in areas with low or no growth. This area will be prioritized for grass growth, but please note it could take time to fully establish.

#### **Staying in touch**

To stay up to date on all our projects, please visit the road construction project pages on our website at [www.sturgeoncounty.ca/Roads](http://www.sturgeoncounty.ca/Roads). We encourage you to sign up to follow this construction project, as well as any others that may be of interest, and receive weekly progress email updates.

If you have any questions or concerns, please contact Khalil Shaikh, project manager, at [kshaikh@sturgeoncounty.ca](mailto:kshaikh@sturgeoncounty.ca) or call 780-939-0618.

We appreciate your understanding as we work to enhance Sturgeon County's infrastructure.

Sincerely,



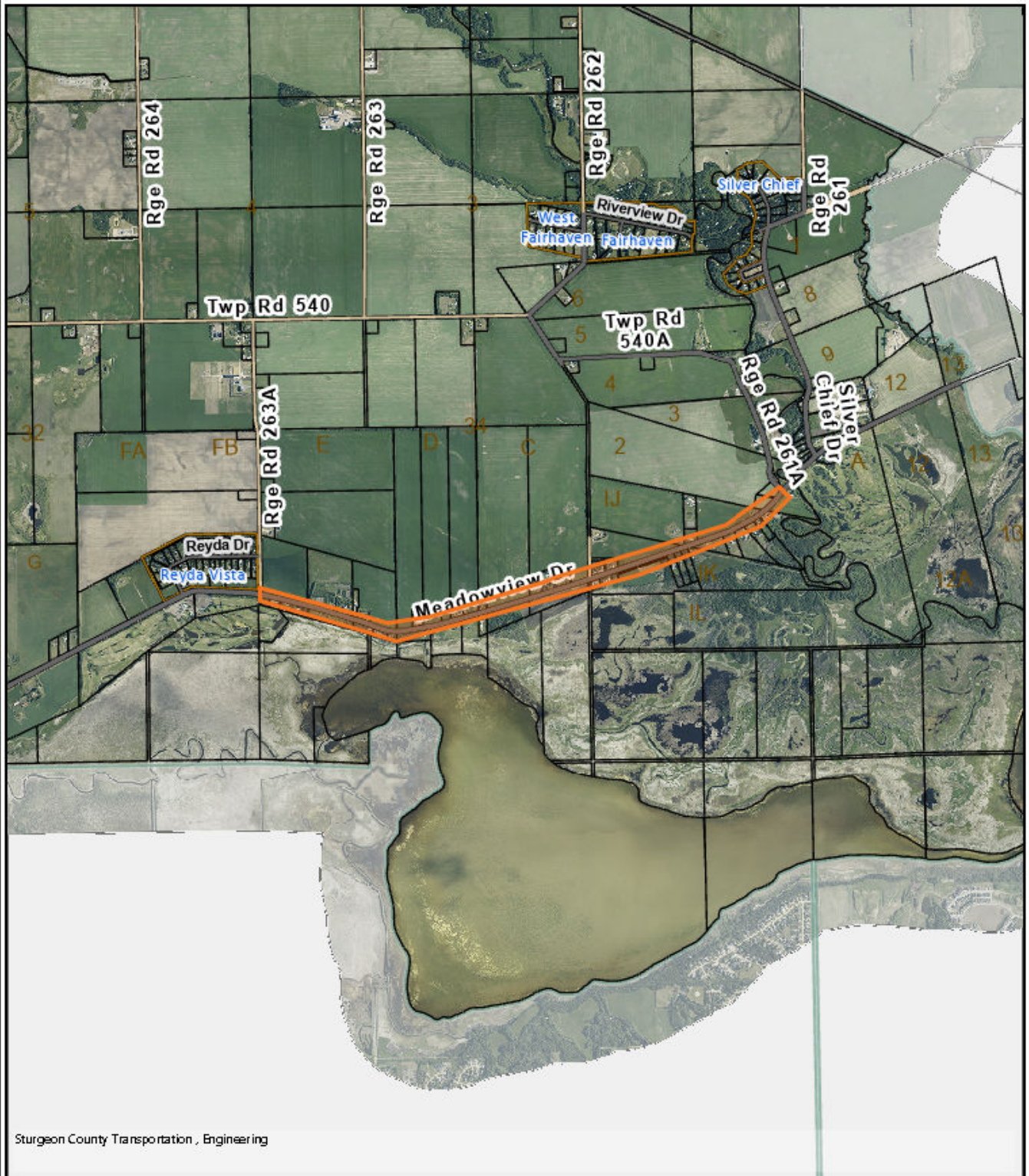
Maximus Adu-Safo  
Director (Acting), Transportation & Engineering Services  
Sturgeon County

Enclosure: 1 (Map)

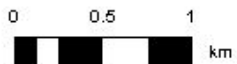


CC: Mayor Alanna Hnatiw, Sturgeon County  
Councillor Matthew McLennan, Division 3, Sturgeon County  
Reegan McCullough, Chief Administrative Officer, Sturgeon County  
Gord Cebryk, General Manager, Infrastructure Services, Sturgeon County

# Meadowview Drive- RR 261A to RR 263A



Sturgeon County Transportation, Engineering



This map is a user generated static output and is for reference only. Data layers that appear on this map are presented 'as is' and may or may not be accurate, current, or otherwise reliable.



## Notes

 Project Limits

